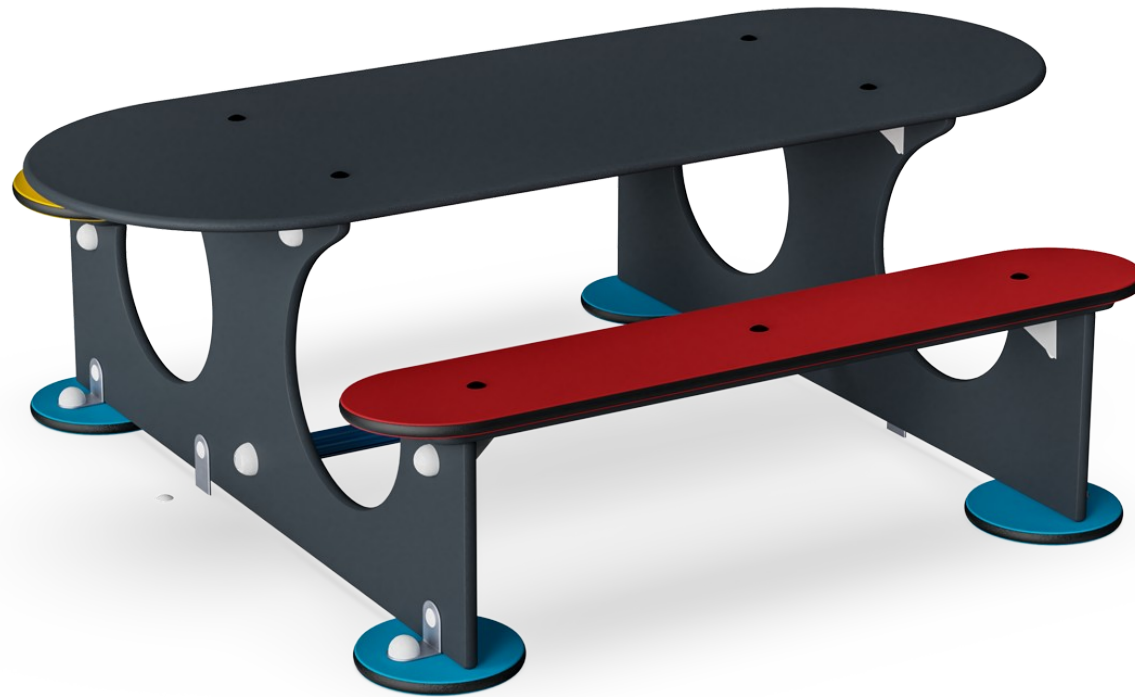


Garden Table

M230

KOMPAN
Let's play



Item no. M23070-3418P

General Product Information

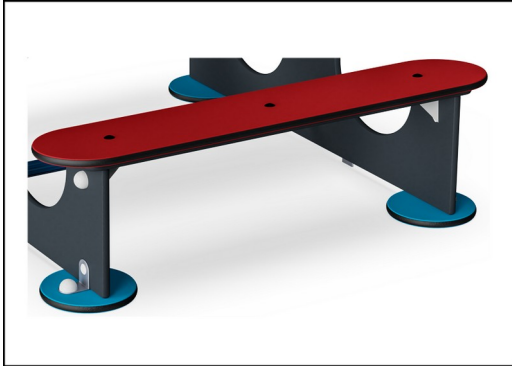
Dimensions LxWxH	128x156x54 cm
Age group	2 - 5
Play capacity (users)	6
Colour options	●

Our garden tables serves multiple functions for children. Designed at the right heights for young ones and colored in bright red and yellow, this is the table that young ones will be naturally drawn to. Its vast surface area and durable top is perfect for art projects, crafts, or other fun activities. It is perfect for a picnic table for an afternoon lunch or snack.

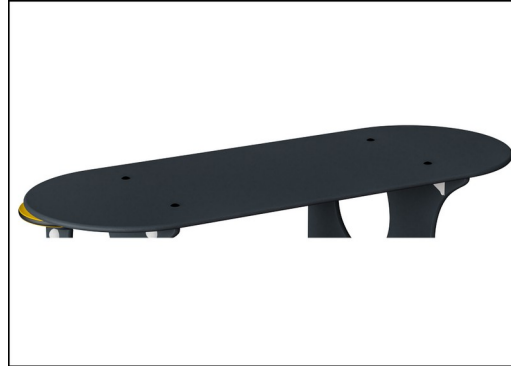


Garden Table

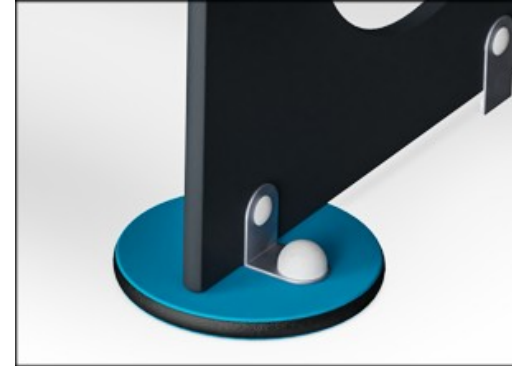
M230



Panels of 19mm EcoCore™. EcoCore™ is a highly durable, eco friendly material, which is not only recyclable after use, but also consists of a core produced from 100% recycled material.



All decks are made of High Pressure Laminate HPL with a thickness 17.8mm and non skid surface texture according to EN 438-6. KOMPAN HPL has high wearing strength to ensure long lifetime in all climates.



The steel surfaces are hot dip galvanized inside and outside with lead free zinc. The galvanization has excellent corrosion resistance in outside environments and requires low maintenance.

Item no. M23070-3418P

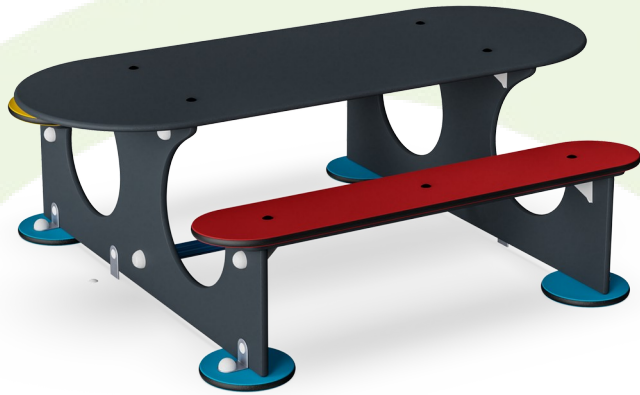
Installation Information

Max. fall height	0 cm
Safety surfacing area	0,0 m ²
Total installation time	3,5
Excavation volume	0,05 m ³
Concrete volume	0,00 m ³
Footing depth (standard)	60 cm
Shipment weight	78 kg
Anchoring options	In-ground ✓ Surface ✓

Warranty Information

EcoCore HDPE	Lifetime
HPL decks	15 years
Hot dip galvanized steel	Lifetime
Spare parts guaranteed	10 years





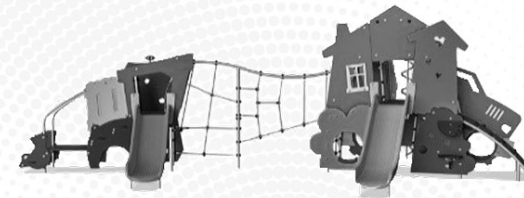
Cradle to Gate A1-A3	Total CO ₂ emission	CO ₂ e/kg	Recycled materials
	kg CO ₂ e	kg CO ₂ e/kg	%
M23070-3418P	144,50	1,97	20,20

The overall framework applied for these factors is the Environmental Product Declaration (EPD), which quantifies "environmental information on the life cycle of a product and enable comparisons between products fulfilling the same function" (ISO, 2006). This follows the structure and applies a Life-Cycle Assessment approach to the entire Product stage from raw material through manufacturing (A1-A3))

Kompan A/S
 C.F. Tietgens Boulevard 32C
 DK-5220 Odense SØ
 Denmark



Validation of CO₂ calculation of: Themed play systems



Data version no. 2021-09-27

The CO₂ calculation and data are in compliance with the principles of a carbon footprint impact according to the GHG protocol (Greenhouse Gas Protocol), Scope 3, cradle to gate related to all individual components in the product category: "Themed play systems" represented by item no.: MSC641100-3717P.

(Scope 3 emissions include emission sources in the upstream and downstream value chain).

Date: 15. October 2021 | Valid until: 15. October 2023

Validated by:

Bente Hviid, Senior Consultant

Peter Bendtsen, Senior Consultant

Validation based on report: Validation of CO₂ calculation of 8 categories of Kompan product line, version 1.0, prepared by: Bureau Veritas HSE, Denmark: Bente Hviid and Peter Bendtsen.

Publication date: 15. October 2021

By Bureau Veritas HSE
 www.bureauveritas.dk
 +45 7731 1000

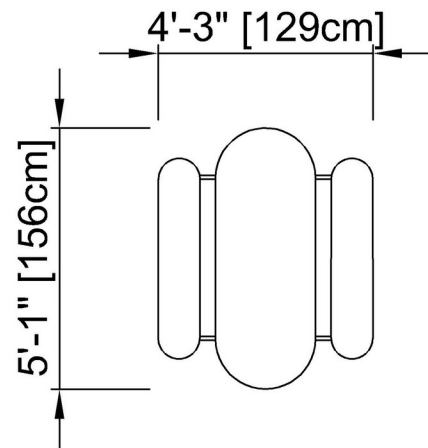


Garden Table

M230

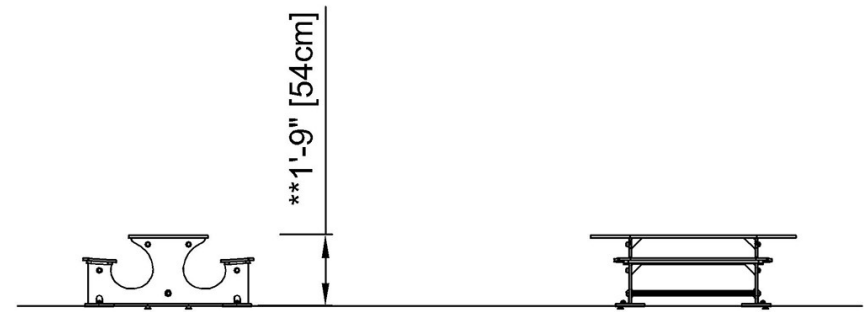
* Max fall height | ** Total height | *** Safety surfacing area

* Max fall height | ** Total height



M23070P

** 1'-9" / 54cm



M23070P

[Click to see TOP VIEW](#)

[Click to see SIDE VIEW](#)