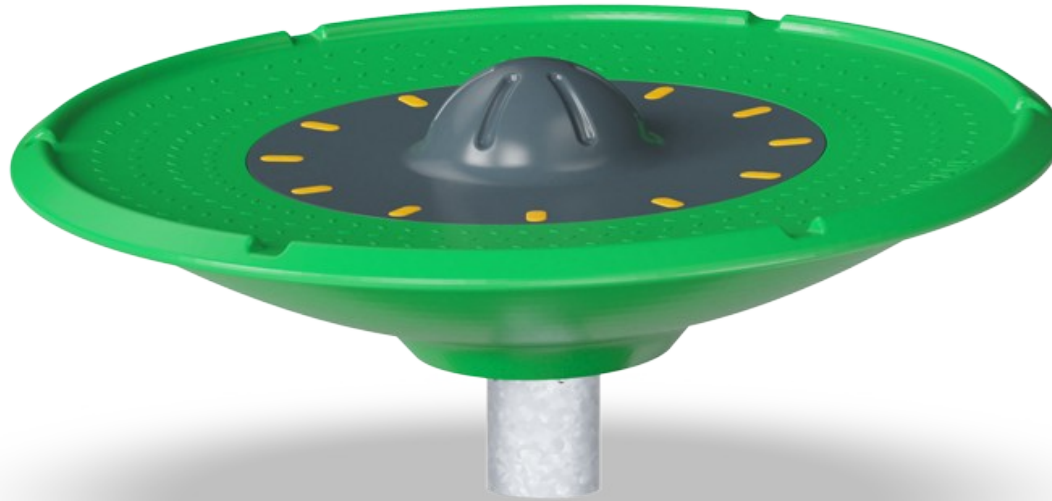


# Spinner Disc

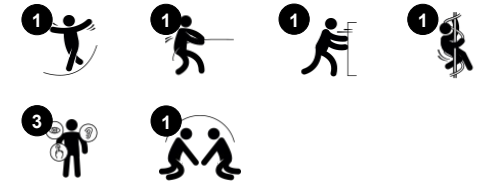
GXY959



Item nummer GXY959012-3717

## Algemene Product Informatie

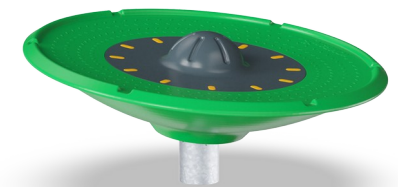
Afmetingen LxBxH	175x176x74 cm
Leeftijdsgroep	6+
Speelcapaciteit	7
Kleuropties	



WOW! The Spinner Disc makes children squeal from joy: It rotates, tickles the stomach and is spacious enough for groups of children playing. The fun rough and tumble play will make children come back again and again. The social appeal for children is evident: you can be active, and close together. Responsive to children's movements, the disc spins when

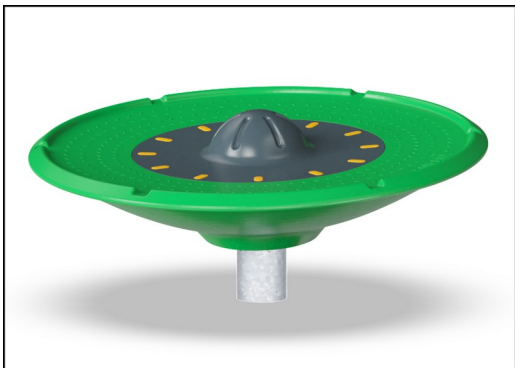
pushed or pulled. Apart from being a fun negotiation and turn-taking game, the pushing and pulling build muscles and cardio. Children can lie, sit or stand on the Spinner Disc with the support of the hunch in the middle. This welcomes children with mobility disabilities to be part of the play, too. The rotation trains the sense of balance which is fundamental for all

other skills. A well-trained sense of balance helps children to navigate the world securely, e.g. preventing falls when playing actively. The Spinner Disc is an important, responsive activity for play and active breaks.

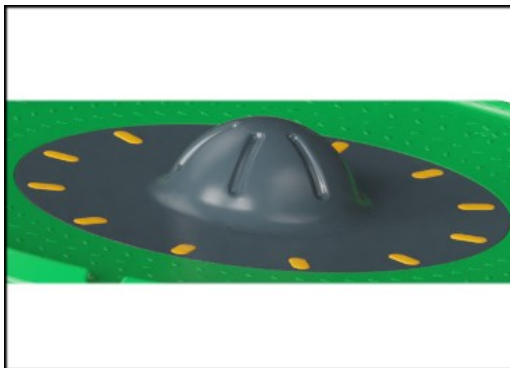


# Spinner Disc

GXY959



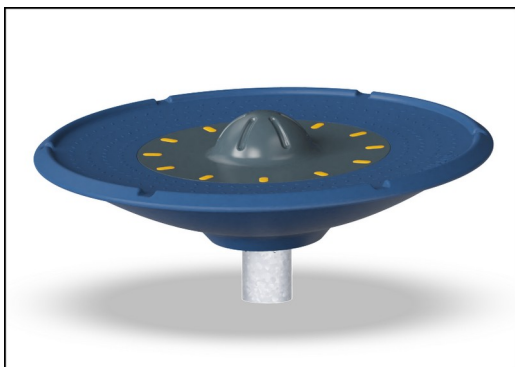
De buitenste ring van de Spinner Disc is gemaakt van gerecycled LDPE. De ring is uit één stuk gegoten en voorzien van geïntegreerde draadbussen en drainageopeningen. Dit garandeert een hoge mate van duurzaamheid, in elk klimaat waar ook ter wereld.



Het centrale gedeelte van het draaitoestel is gemaakt van gerecycled LDPE. Dit gedeelte is door middel van 12 bevestigingspunten verbonden aan de buitenste ring. Deze bevestigingspunten zijn afgedekt met gele PA (nylon) afdekkoppen.



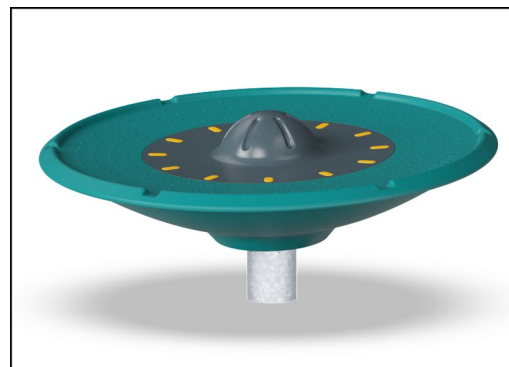
De zandkleurige variant is gemaakt van rotatiegegoten steen gemengd PE-materiaal met een niet-gladde oppervlaktetextuur. Geringe verschillen in uiterlijk van het steenmixmateriaal zijn onvermijdelijk.



Zwaar uitgevoerd lagersysteem met enkele rij diepgroefkogellagers met rubberen afdichtingen. De volledig gesloten lagerconstructie hoeft nooit gesmeerd te worden en is daarmee onderhoudsvrij.



De stalen oppervlakken zijn van binnen en buiten thermisch verzinkt met loodvrij zink. Het verzinken heeft een uitstekende corrosiebestendigheid in de buitenlucht en vereist weinig onderhoud.



GreenLine versions in dark teal color are designed with molded PP parts which consist of 25% recycled post consumer waste and 75% virgin material. GreenLine ensures the lowest possible CO2e emission factor.

Item nummer GXY959012-3717

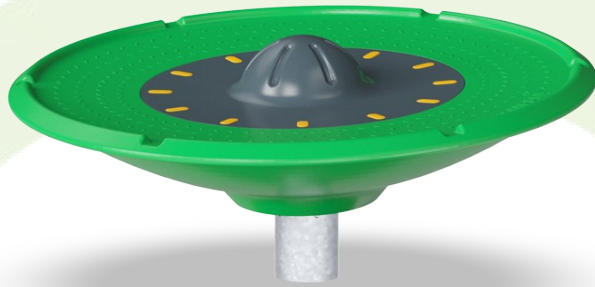
## Installatie informatie

Max. valhoogte	100 cm
Veiligheidszone	17,8 m <sup>2</sup>
Totale installatietijd	3,7
Graafwerk (vol.)	0,44 m <sup>3</sup>
Benodigd beton	0,31 m <sup>3</sup>
Verankeringsdiepte	100 cm
Verzendingsgewicht	157 kg
Verankeringsopties	Oppervlak ✓ In-ground ✓

## Garantie informatie

Holle PE-onderdelen	10 jaar
Lagerhuisconstructie	5 jaar
Gegalvaniseerd staal	Levenslang
Solid plastic parts	10 jaar
Gegarandeerde reserveonderdelen	10 jaar





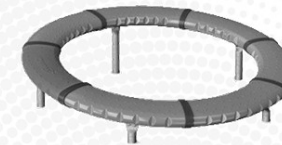
Cradle to Gate A1-A3	Total CO <sub>2</sub> emission	CO <sub>2</sub> e/kg	Recycled materials
	kg CO <sub>2</sub> e	kg CO <sub>2</sub> e/kg	%
<b>GXY959012-3717</b>	306,50	2,27	23,30
<b>GXY959021-3717</b>	288,30	2,14	33,90

The overall framework applied for these factors is the Environmental Product Declaration (EPD), which quantifies "environmental information on the life cycle of a product and enable comparisons between products fulfilling the same function" (ISO, 2006). This follows the structure and applies a Life-Cycle Assessment approach to the entire Product stage from raw material through manufacturing (A1-A3))

**Kompan A/S**  
 C.F. Tietgens Boulevard 32C  
 DK-5220 Odense SØ  
 Denmark



### Validation of CO<sub>2</sub> calculation of: Freestanding play equipment



Data version no. 2021-09-27

The CO<sub>2</sub> calculation and data are in compliance with the principles of a carbon footprint impact according to the GHG protocol (Greenhouse Gas Protocol), Scope 3, cradle to gate related to all individual components in the product category: "Freestanding play equipment" represented by item no.: GXY916012-3417.

(Scope 3 emissions include emission sources in the upstream and downstream value chain).

**Date: 15. October 2021 | Valid until: 15. October 2023**

**Validated by:**

Bente Hviid, Senior Consultant

Peter Bendtsen, Senior Consultant

Validation based on report: Validation of CO<sub>2</sub> calculation of 8 categories of Kompan product line, version 1.0, prepared by: Bureau Veritas HSE, Denmark: Bente Hviid and Peter Bendtsen.

**Publication date: 15. October 2021**

**By Bureau Veritas HSE**  
 www.bureauveritas.dk  
 +45 7731 1000

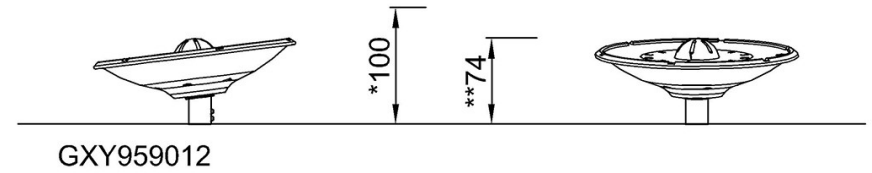
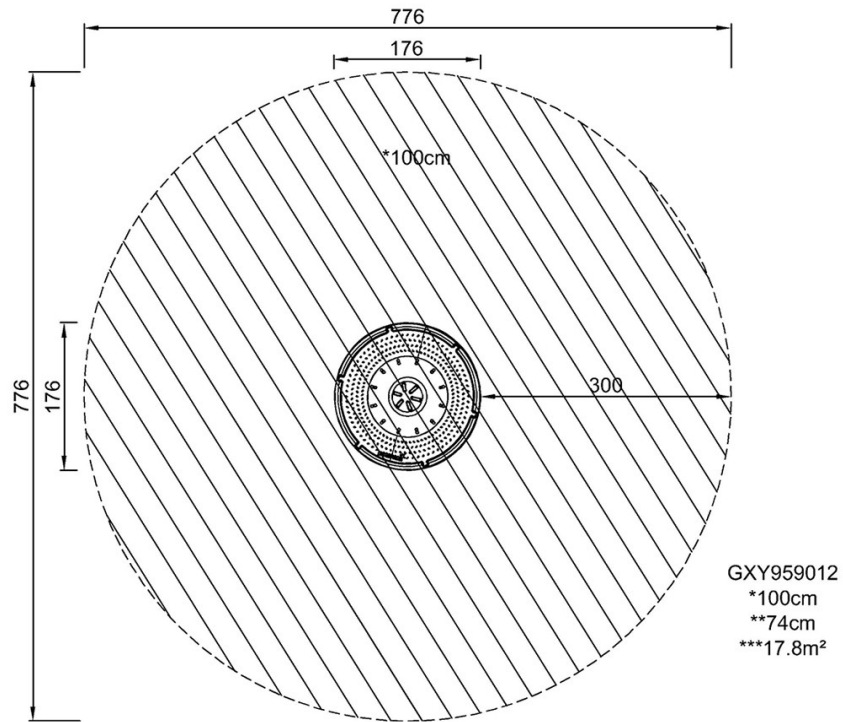


# Spinner Disc

GXY959

Max. valhoogte | Totale Hoogte | Veiligheidszone

Max. valhoogte | Totale Hoogte



[Bekijk BOVENAANZICHT](#)

[Bekijk ZIJAAANZICHT](#)